

# LSA-PLUS® Wall Distribution Frame

# 11.4 Main Distribution Frame

## LSA-PLUS® Wall Distribution Frame

Order No.	LSA-PLUS Wall DistributionFrame	Pack
6577 1 011-04	LSA-PLUS Wall Distribution Frame Basic kit	1 pc

The LSA-PLUS wall mounted distributor is a quick mounting rack which can accommodate up to 4 self-supporting backmount frames 2/8 and/or 2/10. Each kit has a distribution capacity of up to 2000 pairs (series 2/10) or up to 1600 pairs (series 2/8)

Kits which should be arranged can be combined to form banks and are suitable for wall mounting or mounting in distribution cabinets. The available space may be 60 mm bigger than the frame width.

### Dimensions:

Width = 696mm

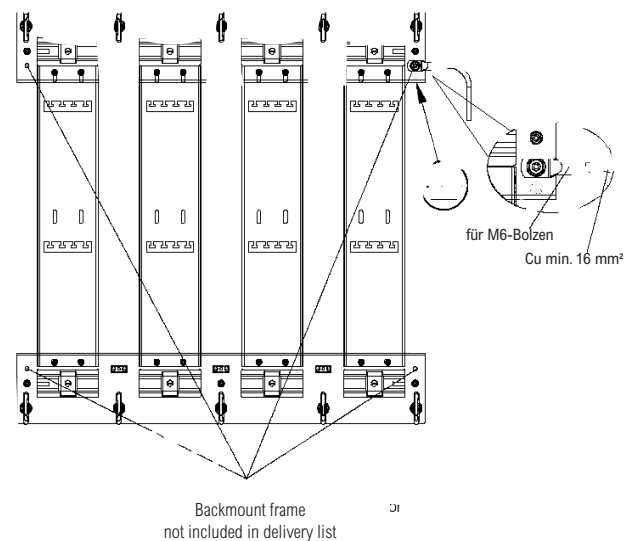
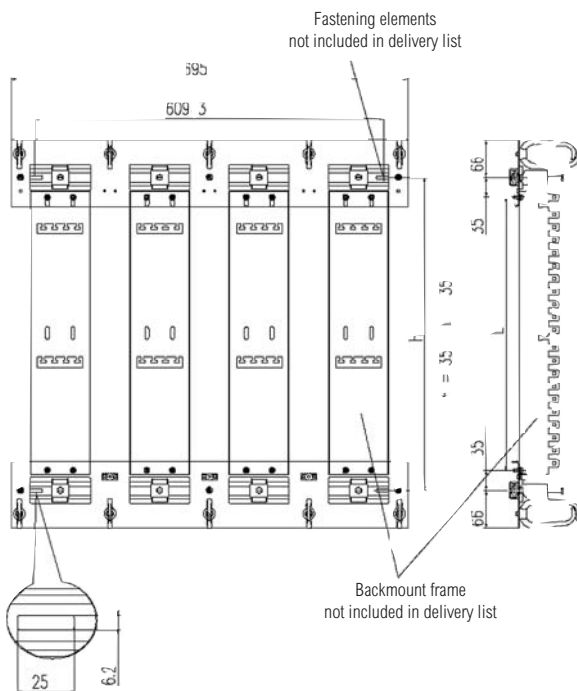
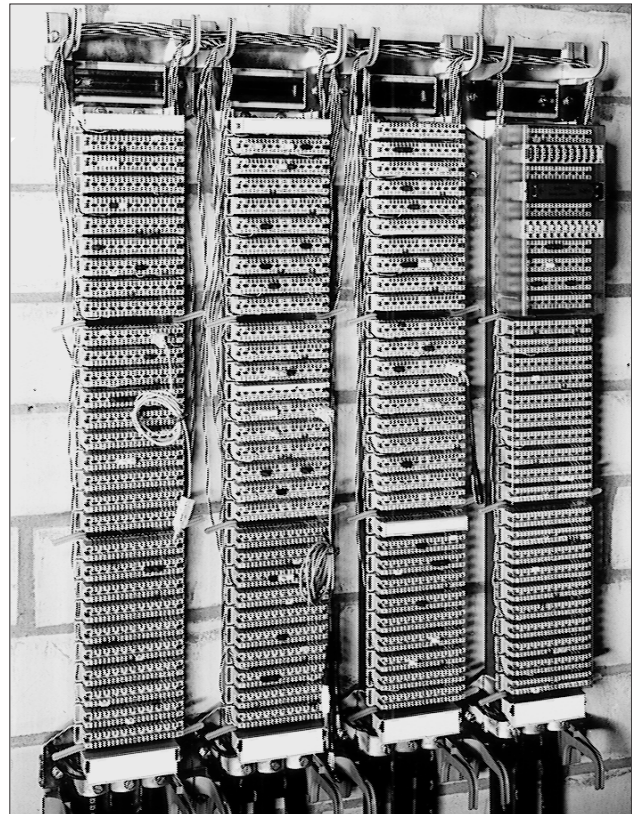
Height = H + 132 mm

Fixing-distance of the c-rails  $H = L + 70$  mm

Hole-distance of the backmount frames  $L = (M-1) \times R + 70$  mm

M = Number of modules (30 upto 50 recommends)

R = Pitch (22,5 or 25 mm)



# 11.5

## Main Distribution Frame

# LSA-PLUS® Wall Distribution Frame

### LSA-PLUS®-Wall Distribution Frame - Accessories

Order No.	LSA Wall Distribution Frame	Pack
5267 3 585-00	LSA Backmount frame 2/10 for 1 x 10+1 Module 2/10	1 pc
5267 3 585-01	LSA Backmount frame 2/10 for 2 x 10+1 Module 2/10	1 pc
5267 3 585-02	LSA Backmount frame 2/10 for 3 x 10+1 Module 2/10	1 pc
5267 3 585-03	LSA Backmount frame 2/10 for 4 x 10+1 Module 2/10	1 pc

For 10 LSA-PLUS modules 2/10 with additional position for one additional LSA-PLUS module 2/10, or one Module Label holder 2/10, or one LSA-PLUS Earth module 2/38. Cable supply from inside the LSA Backmount frame. For indoor usage mounted in wall distribution frames and free-standing distribution frames or for outdoor distribution boxes, cross connection cabinets.

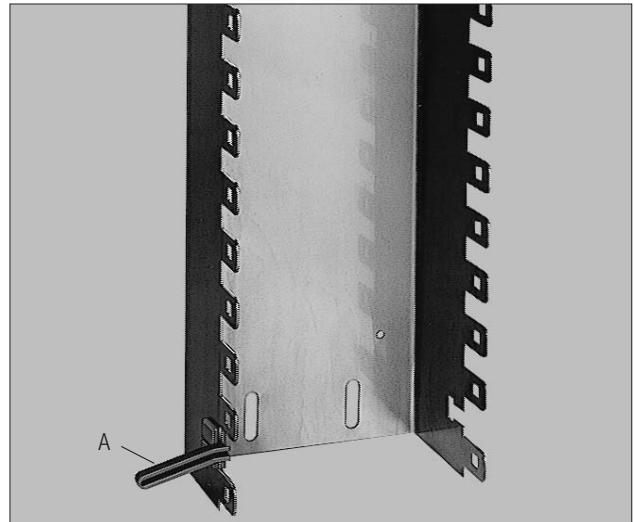
Dimensions: T=50 mm (depth of cable space), R=22,5 mm (Pitch), R1=30 mm (Pitch of additional position)

Modules	L (length)	fixing width
1 x 10+1	263.0 mm	240.0 mm
2 x 10+1	495.5 mm	472.5 mm
3 x 10+1	728.0 mm	705.0 mm
4 x 10+1	960.5 mm	937.5 mm

Material: stainless steel X 5 CrNi 1810n, untreated

5267 3 589-00	Jumper Guide	1 pc
---------------	--------------	------

See detail A in figure.



Order No.	LSA Mounting adapter	Pack
6455 3 027-00	LSA Mounting adapter	1 pc

System component for fixing up variable wall distribution frames or frames built in distribution cabinets. Suitable for backmount frames series 2/8 and 2/10. The smallest distributor unit consists of one backmount frame fixed between two LSA mounting adapters equipped with LSA-PLUS modules, or two LSA-PROFIL rods fixed between two LSA mounting adapters equipped with LSA-PROFIL modules.

A clip-on system in the adapters enables further units to be added horizontally and/or vertically as required.

The installation aids needed in distributors are integrated into the adapter:

- 3 cable fixing points,
- 2 switching wire guides,
- 2 mounting holes for vertical or horizontal wall mounting or isolated fixing of backmount frames in cabinets

R=Pitch (22.5mm or 25mm)  
M=Modules  
L=Fixing length

