

# KRONE

## **KRONECTION<sup>®</sup> BOX**

*The compact box family  
in three sizes as  
a variable modular system  
for surface and flush installation*



**KRONE-LSA-PLUS-Kontakte<sup>®</sup>**

# KRONECTION® Box I, II, III – The box family as a variable distributing system for surface or flush installation

KRONECTION® boxes follow the trend which has led to smaller and smaller connecting elements in electronic distributing systems. The new KRONE family features an exceptional versatility with three compact sizes, with variable depth for surface or flush installation.

A small number of components means an efficient stock-keeping which again ensures a high rate of adaptability. With its practical

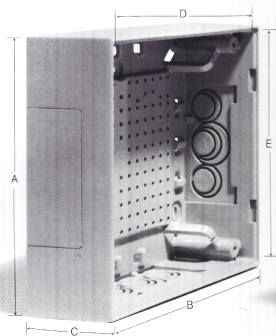
polystyrene material – is excellently suited for rough operating conditions. This means that the boxes are corrosion-resistant, highly resistant to shock, sturdy, and maintenance-free.

All installation aids such as cable bushings, cable fixing lugs, and bushing rings are already pre-formed at the KRONECTION® box so that only a minimum of additional installation tools is required.

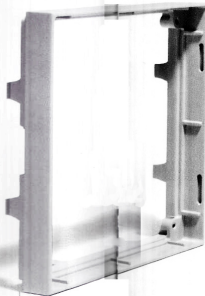
of a turn buckle. The simple turn buckle can be opened using a coin or a bigger screw-driver. It may be replaced by a cylinder lock. The basic box version is normally sufficient for surface or flush installation. If a flush mounted box has not been installed properly – eg. in a slightly too deep or slanted position –

protection magazines, the built-in depth can be increased by means of an attached frame. The box cover and/or frame may be used in the same way with such a type of installation.

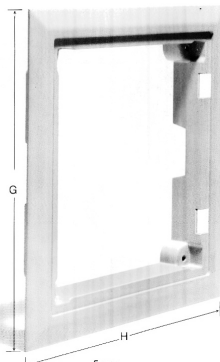
Explosion drawing  
of components



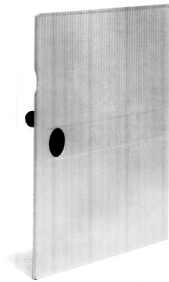
Box\*



Attached frame



Frame



Cover

design and space-saving dimensions, the KRONECTION® box meets all requirements of its respective place of installation.

By simply arranging several boxes in a row, almost any conceivable distributor size can be realized.

The material of the boxes – self extinguish

The removable base plate of the distribution box is provided with a pattern of fixing holes allowing both the installation of various connecting elements of the KRONE LSA-PLUS system and the fitting of other devices. The basic version of the box consists of a box with the cover.

The cover can be connected with the box by a cord and can be closed by means

this situation can be compensated by means of a frame covering the improper plaster areas. In such a case, the cover is fixed at the frame instead of the box. If the depth of the box does not allow for the installation of bigger units, such as bell transformers or over voltage

KRONECTION® boxes I, II, and III are available as empty boxes for individual assembly or as distribution boxes wholly or partly equipped with devices of the KRONE LSA-PLUS quick connection system.

## The most important dimensions

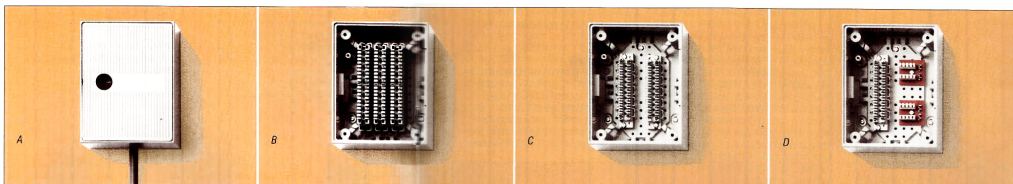
Type	A	B	C	D	E	F	G	H
KRONECTION® Box I	170	140	75	125	155	37	210	180
KRONECTION® Box II	215	215	75	200	200	37	255	255
KRONECTION® Box III	320	215	75	200	305	37	375	255

\* New! As of May 1985 it has been made possible to remove the base plate from the box for even easier installation of cables and connection modules.

# The LSA-PLUS quick connection system, optimally "packed": easy to operate, space-saving, and protected against dust

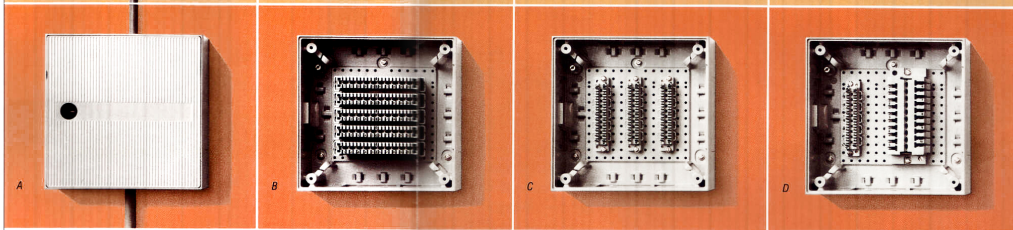
## KRONECTION™ Box I

- A Empty box with cover
- B Distribution box, equipped with 3 LSA-PLUS modules 2/10
- C Distribution box, equipped with 1" and 2" LSA-PLUS strips connexion 1/10 with standardized fixing dimensions (acc. to DIN 47614)
- D Example of equipment of an empty box with 1 LSA-PLUS strips connexion 1/10 and plug-on connection elements for telephones and other telecommunication equipment



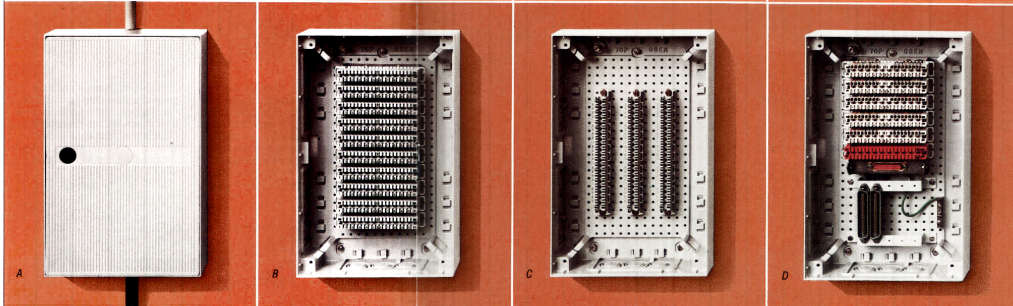
## KRONECTION™ Box II

- A Empty box with cover
- B Distribution box, equipped with 5 LSA-PLUS modules 2/10
- C Distribution box, equipped with 2" up to 4" LSA-PLUS strips connexion 1/10 with standardized fixing dimensions (acc. to DIN 47614)
- D Example of equipment of an empty box, combined with 1 LSA-PLUS strips connexion 1/10 and 1 LSA-PLUS connection module for greater wire diameters or dropwires



## KRONECTION™ Box III

- A Empty box with cover
- B Distribution box, equipped with 10 LSA-PLUS modules 2/10
- C Distribution box, equipped with 2" up to 4" LSA-PLUS strips connexion 1/20 with standardized fixing dimensions (acc. to DIN 47614)
- D Example of equipment of an empty box as main distribution for a plug-on type private branch exchange



Re.: B  
The box as supplied ex works is fitted with back mount frames for the attachment of LSA-PLUS modules. The LSA-PLUS modules must be ordered separately according to the customer's individual requirements. (see LSA-PLUS list of equipment)

Re.: C  
\*Available ex works as a complete unit.

Re.: D  
All build-in devices must be ordered separately.

# Installation and contact-safe wiring in no time

The KRONJECTION® box is easily installed

Open box using big screwdriver or coin. Remove cable introduction parts, cut out cable shapes as required, and re-insert cable introduction parts. Fix box at wall with attached frame if necessary.

Dismantle and introduce cable. Fix cable in the box using cable fixtures.

Connect ground contact (additional ground wires). Make connection with ground contacts of connection modules and/or back mount frame. Connect connection modules. Close cover. Attach frame before, if necessary.

The decisive advantage: LSA-PLUS quick connection technique.

No soldering

No screwing

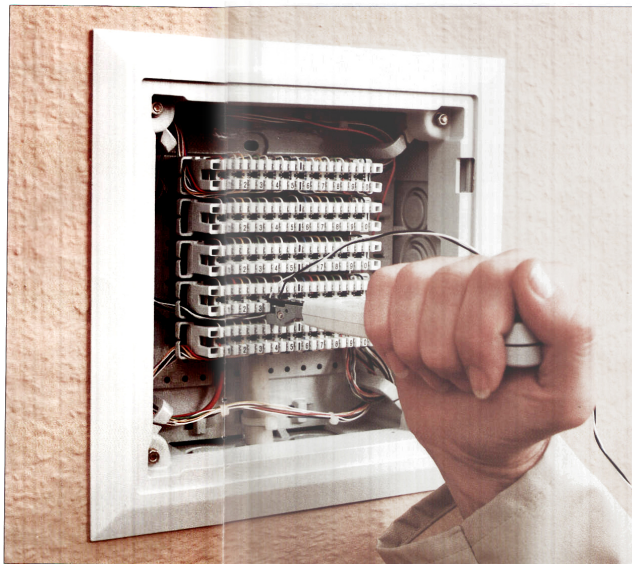
No wire-stripping

The LSA-PLUS quick connection system mainly consists of LSA-PLUS connection modules with contacts for overvoltage arrester magazines, the LSA-PLUS disconnection modules with normally-closed contacts, and the back mount frames onto which the LSA-PLUS modules

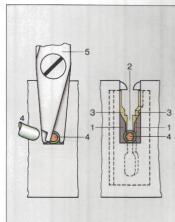
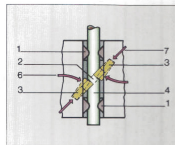
are snapped. LSA-PLUS strips connexion with standardized fixing dimensions are also available. These can be screwed directly onto the bottom of the KRONJECTION® box which is provided with an appropriate layout of fixing holes.

When connecting wires to the KRONJE LSA-PLUS contacts by means of the LSA-PLUS insertion tool, gas-tight contact surfaces are obtained with one manipulation and within a few seconds without soldering, screwing, or wire-

stripping in an extremely simple way. Plastic insulated wires with a conductor diameter of 0.4-0.8 mm and a diameter above the insulation of 0.7-1.5 mm can be connected. More detailed information so far and on the wide range of accessories is given in our brochures "LSA-PLUS quick connection technique" and "LSA-PLUS list of equipment".



Making connections at an open distributor



#### KRONJE-LSA-PLUS-CONTACTS®

- 1 Plastic clamping ribs
- 2 Contact slot
- 3 Contact tags
- 4 Wire
- 5 LSA-PLUS insertion tool
- 6 Torsion forces of contact
- 7 Restoring forces of contact

# Order data of the complete box program

Variant/Type	KRONr (Order No.)
<b>KRONECTION® Box I</b> empty, without connection modules, for surface installation	6436 1 001-20*
Attached frame I for increasing the depth of KRONECTION® Box I	6436 3 003-20
Levelling frame I for flush installation of KRONECTION® Box I	6436 2 004-20
<b>KRONECTION® Box I equipped</b>	
a) with LSA-PLUS strip connexion 1/10 for 10 prs., with ground wire terminals	6436 1 011-20*
b) with 2 LSA-PLUS strips connexion 1/10 for 10 prs. each, with ground wire terminals	6436 1 002-20*
c) with back mount frame for a maximum of 3 LSA-PLUS modules 2/10 for 10 prs. each	6436 1 013-20*
<b>KRONECTION® Box II</b> empty, without connection modules, for surface installation	6406 1 001-20*
Attached frame II for increasing the depth of KRONECTION® Box II	6406 3 003-20
Levelling frame II for flush installation of KRONECTION® Box II	6406 2 004-20
<b>KRONECTION® Box II equipped</b>	
a) with 2 LSA-PLUS strips connexion 1/10 for 10 prs. each, with ground wire terminals	6406 1 002-20*
b) with 4 LSA-PLUS strips connexion 1/10 for 10 prs. each, with ground wire terminals	6406 1 004-20*
c) with back mount frame for a maximum of 5 LSA-PLUS modules 2/10 for 10 prs. each	6406 1 015-20*
<b>KRONECTION® Box III</b> empty, without connection modules, for surface installation	6437 1 001-20*
Attached frame III for increasing the depth of KRONECTION® Box III	6437 3 003-20
Levelling frame III for flush installation of KRONECTION® Box III	6437 2 004-20
<b>KRONECTION® Box III equipped</b>	
a) with 2 LSA-PLUS strips connexion 1/20 for 20 prs. each, with ground wire terminals	6437 1 002-20*
b) with 4 LSA-PLUS strips connexion 1/20 for 20 prs. each, with ground wire terminals	6437 1 004-20*
c) with back mount frame for a maximum of 10 LSA-PLUS modules 2/10 for 10 prs. each	6437 1 020-20*
Re: c): LSA-PLUS modules must be ordered separately to meet the customer's requirements. When using overvoltage arrester magazines, attached frame must be ordered.	

\* with turn buckle = -20  
with cylinder lock = -21

## KRONE INDIA

### KRONE Communications Ltd.

Hosto Centre, II Floor,

No. 43, Miller Road,

Bangalore - 560 052.

Tel :+ 91 80/228 3210, 36 74

Fax :+ 91 80/225 16 93

E-Mail : 102755.1774 @compuserve.com

Germany